

LEGEND

	WALL LIGHT
	POLE LIGHT WITH CONCRETE BASE
	PHOTOMETRIC VALUES (SHOWN IN FOOTCANDLES)
	ISOMETRIC LIGHT CURVES

STANDARD ABBREVIATIONS

AFG	ABOVE FINISHED GRADE
-----	----------------------

NUMERIC SUMMARY

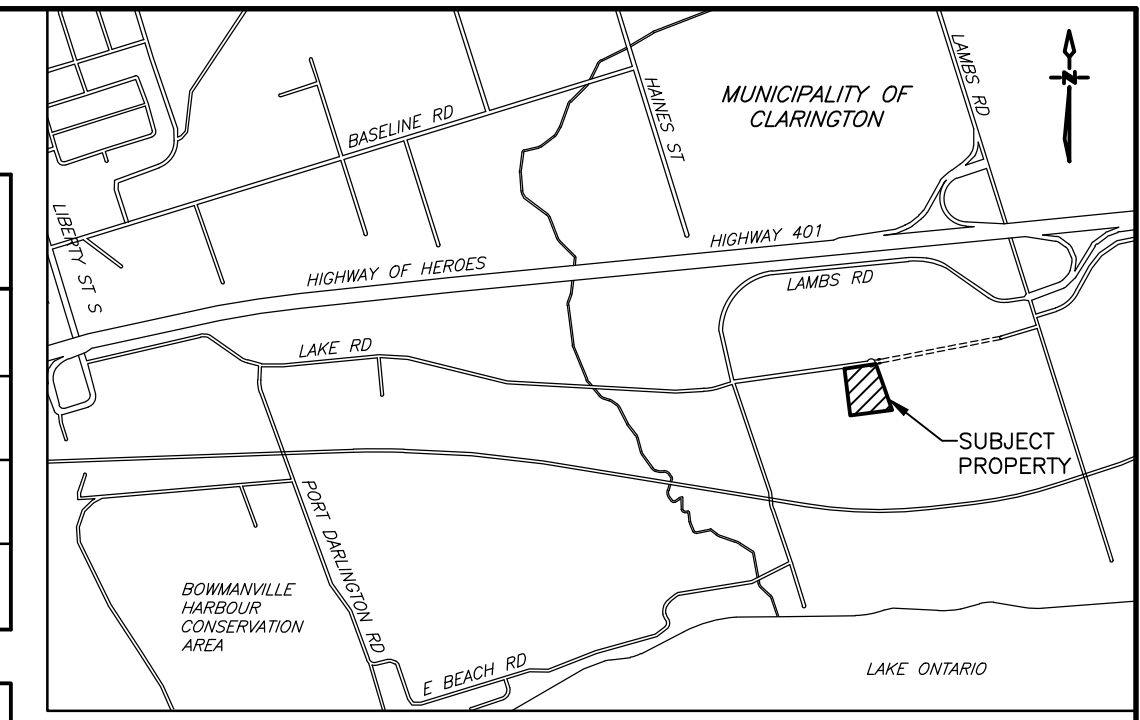
LOCATION	AVERAGE	MAXIMUM	MINIMUM	AVG/MIN	MAX/MIN
ACCESSIBLE PARKING - BLD A	37.35	74.04	21.40	1.75	3.48
ACCESSIBLE PARKING - BLD B	33.74	5.80	21.60	1.56	2.72
DRIVE AISLE	9.66	39.00	1.10	8.78	35.55
GENERAL PARKING - BLD A	16.27	34.70	1.30	12.52	26.69
GENERAL PARKING - BLD B	20.68	32.20	1.30	15.91	24.77
DRIVEWAY APRON	6.73	88.06	2.90	2.32	3.03

QUALIFIED DESIGNER SIGNOFF

THE FOLLOWING STATEMENT IS TO BE INCLUDED ON THE LIGHTING PLAN AND SIGNED BY THE QUALIFIED DESIGNER:

THIS DRAWING INDICATES ALL PROPOSED OUTDOOR LIGHTING FIXTURES FOR THIS PROPOSED DEVELOPMENT. THE LIGHTING DESIGN IS IN ACCORDANCE WITH THE APPLICABLE LIGHTING ZONE AS ESTABLISHED BY THE PLANNING DEPARTMENT, AND DESIGNED WITH AN AVERAGE TO MINIMUM RATIO IN ACCORDANCE WITH THE ILLUMINATING ENGINEERING SOCIETY GUIDELINES. THE LIGHTING DESIGN WILL NOT CREATE ANY OBJECTIONABLE GLARE FOR ADJACENT PROPERTIES.

SIGNATURE OF QUALIFIED DESIGNER



KEY PLAN
NOT TO SCALE

PRELIMINARY
NOT FOR CONSTRUCTION

SITE LIGHTING NOTES

- ALL NEW OUTSIDE LIGHTS TO BE CONTROLLED BY BUILDING PHOTOCELL AT HIGH LEVEL AND TIME SWITCH COORDINATE CONTROLS AND POWER REQUIREMENTS WITH BUILDING DISTRIBUTION DRAWINGS.
- THIS DRAWING INDICATES ALL PROPOSED OUTDOOR LIGHTING FIXTURES FOR THIS PROPOSED DEVELOPMENT. THE LIGHTING DESIGN IS IN ACCORDANCE WITH THE APPLICABLE LIGHTING ZONE AS ESTABLISHED BY THE PLANNING DEPARTMENT, AND DESIGNED WITH AN AVERAGE TO MINIMUM RATIO IN ACCORDANCE WITH THE ILLUMINATING ENGINEERING SOCIETY GUIDELINES. THIS LIGHTING DESIGN WILL NOT CREATE ANY OBJECTIONABLE GLARE FOR ADJACENT PROPERTIES.
- CONTRACTOR TO BE RESPONSIBLE FOR LOCATION OF ALL EXISTING UNDERGROUND & OVERHEAD UTILITIES. VARIOUS UTILITIES CONCERNED TO BE GIVEN REQUIRED ADVANCE NOTICE PRIOR TO ANY DIGGING, FOR STAKE OUT. THE CONSULTANT ASSUMES NO RESPONSIBILITY FOR THE ACCURACY OF THE LOCATION OF EXISTING UTILITIES AS INDICATED ON THIS DRAWING.
- CONTRACTOR TO REVIEW LIGHT FIXTURE SHOP DRAWINGS WITH CLIENT AND ENGINEER PRIOR TO COMMENCEMENT OF WORK FOR FINAL APPROVAL.
- FINAL LOCATIONS OF WALL MOUNTED LIGHTING TO BE APPROVED BY ARCHITECT AND OWNER PRIOR TO COMMENCEMENT OF WORK.
- PHOTOMETRIC VALUES ARE SHOWN IN LUX WITH ISOMETRIC LIGHT CURVES.
- ALL LIGHT FIXTURES TO BE FULL CUT-OFF, DOWNLIGHTING ONLY, DARK SKY COMPLIANT.

POLE SCHEDULE

TAG	MANUFACTURER	DESCRIPTION	HEIGHT	QTY	MODEL NUMBER	NOTES
A	DYNAPOLE	4" STRAIGHT, SQUARE, STEEL POLE, BLACK	6.1 m	12	SSS4-20	REFER TO LIGHT POLE BASE DETAIL

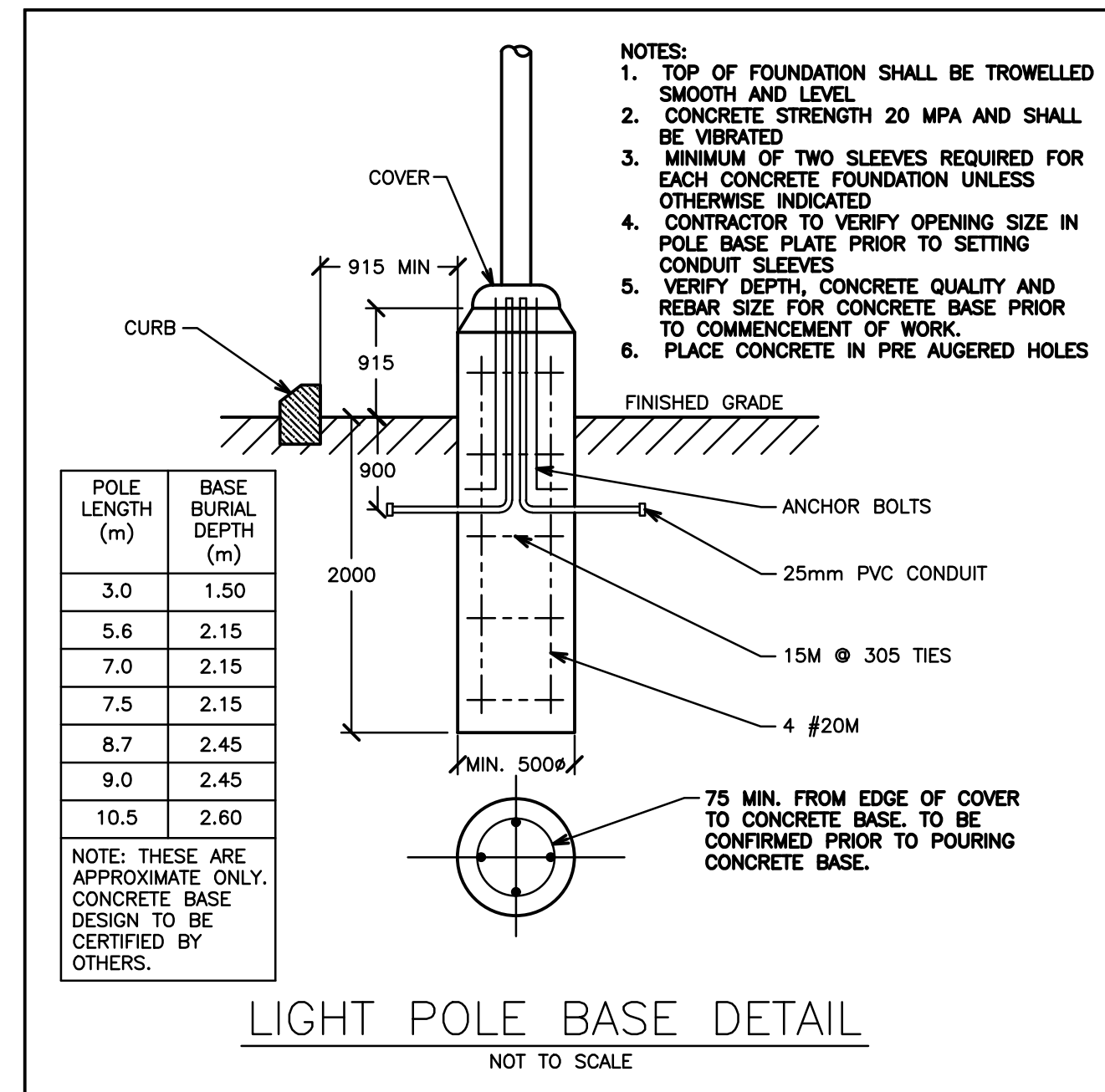
SITE LIGHTING SCHEDULE

WALL LIGHTS

TAG	SYMBOL	DESCRIPTION	WATTAGE	QTY	CCT	MODEL NUMBER	MOUNTING HEIGHT
W1		LITHONIA WDGE1 LED ARCHITECTURAL WALL SCONCE, FULL CUT-OFF	7 W	22	3000K	WDGE1 LED P0 30K 80CRI VF MVOLT	3.7 m AFG
W2		LITHONIA WDGE2 LED ARCHITECTURAL WALL SCONCE, FULL CUT-OFF	23 W	21	3000K	WDGE2 LED P3 30K 80CRI VF MVOLT	3.7 m AFG

POLE LIGHTS

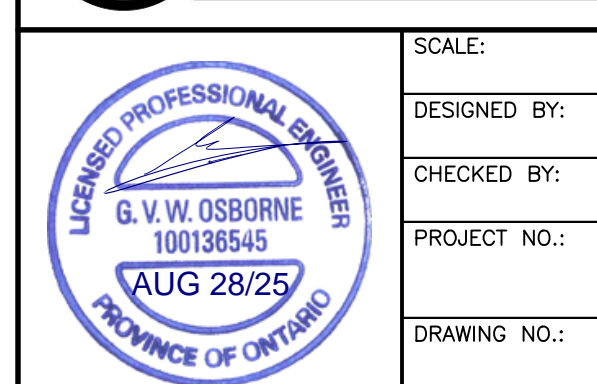
TAG	SYMBOL	DESCRIPTION	POLE	WATTAGE	QTY	CCT	MODEL NUMBER	MOUNTING HEIGHT
P1		LITHONIA D-SERIES SIZE 0 LED AREA LUMINAIRE, FULL CUT OFF	A	51 W	8	3000K	DSXO LED P3 30K 80CRI BLC3 MVOLT	7.0 m AFG
P2		LITHONIA D-SERIES SIZE 0 LED AREA LUMINAIRE, FULL CUT-OFF	A	45 W	1	3000K	DSXO LED P2 30K 80CRI T3M MVOLT	7.0 m AFG
P3		LITHONIA D-SERIES SIZE 0 LED AREA LUMINAIRE, FULL CUT-OFF	A	90 W	2	3000K	DSXO LED P5 30K 80CRI BLC3 MVOLT	7.0 m AFG
P4		LITHONIA D-SERIES SIZE 0 LED AREA LUMINAIRE, FULL CUT-OFF	A	93 W	1	3000K	DSXO LED P4 30K 80CRI BLC3 MVOLT	7.0 m AFG



4.	REVISED AS PER 1ST SUBMISSION COMMENTS	FEB 2025
3.	ISSUED FOR STAGE 2 PRE CON	JUNE 2024
2.	ISSUED FOR COORDINATION	MAY 2024
1.	ISSUED FOR COORDINATION	MARCH 2024
NO.	SUBMISSION	DATE

JASS GILL
725 LAKE ROAD, CLARINGTON, ONTARIO

SITE LIGHTING PHOTOMETRIC PLAN



SCALE:	1:300
DESIGNED BY:	F.K.
CHECKED BY:	G.V.W.O.
PROJECT NO.:	123081
DRAWING NO.:	SL-1

96 King Street East
Oshawa, Ontario, L1H 1B6
Phone: 905-576-8500
info@dgbiddle.com
dgbiddle.com